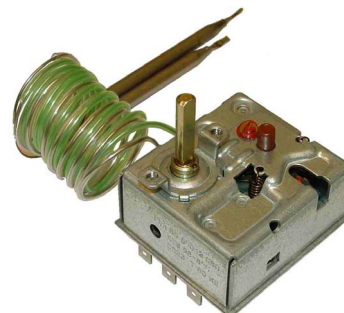


Combined control and / safety-limit thermostat, 3-pole switch, 30..60..95°C/120°C; 0,8m

Order No.: 005-1504



TR/STB 1157 03

Application

Combined control and safety-limit thermostat for electric boilers

Features

- TR Electro-mechanical thermal control (TR), approved to DIN 3440 and EN60730-1/-2-9, not fail safe.
- STB Electro-mechanical, fail safe safety thermal cut-out (STB), approved to DIN 3440, EN60730-1/-2-9 and directive 97/23/EG, Exceeding the cut-out temperature, the circuit switches to OFF and stays at this position. Manual reset is enabled after a temperature drop of approx. 10 K on the sensing element.
- Time factor of the sensing element complying with DIN 3440
 - TR: type 2 B according EN 60 730-1 /-2-9)
 - STB: type 2 B according EN 60 730-1 /-2-9)
 - Environmental condition for pollution: normal

Order No.

005-1504 (only thermostat)

Technical data

The following indication are valid for the standard type 55.60012.360. Due to the function, other types show different data.

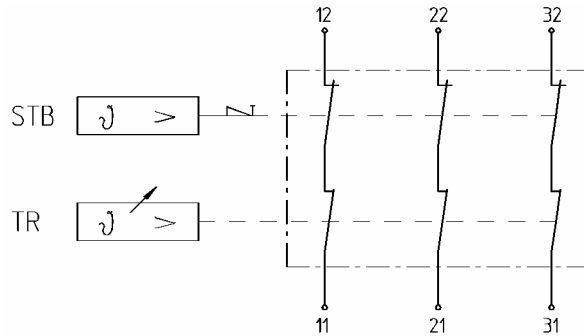
Switching system	Service life at nominal load	100'000 operations
	• Nominal voltage range	AC 40...400 V
	• Nominal current range I (I _M)	0.5...20 (3.3) A
	Protection class	I according to EN 60 730-1
	Protection class of housing	IP00 according to EN 60 529
Application range	Range	30 ... 60 ... 95°C
	Cut-out temperature ϑ_{off}	120 (0-8K) °C
	Ambient temperature at switching head	max. 80 °C (T80)
	Thermal differential	15.0 K \pm 7.5.0K
	Sensing element temperature TR	max. 150°C
	Sensing element temperature STB	max. 170°C
	Storage and transportation temperature	-30...+120 °C
	Minimal capillary bending radius	R _{min} = 5 mm
	Correction factor TR	c = 0,26 [K/K] referred to ambient temp.
	Correction factor STB	c = 0,37 [K/K] referred to ambient temp.
Calibration	Calibration tolerance	\pm 5 K
	Calibrated for ambient temperature at switching head and capillary	23 \pm 2 °C (Tu23 according to DIN 3440)
	Time factor in water / in Oil	< 45 s / < 60 s
Execution	Switch system support	Thermoplastic
	Capillary tube	Stainless steel
	Sensing element	Stainless steel
	Diaphragm	Stainless steel
	Capillary tube length L	870 mm
	Electrical connection equipment side	Faston A6.3-0.8-Br acc. DIN 46 244
	Electrical connection installation side	Screw terminal
	Earth terminal connection	Faston A6.3-0.8-Br acc. DIN 46 244
	Weight	Approx. 223 gr.

Mounting indications

The required pocket material depends on the installation (medium, tank material etc.) and **must be specified by the user**

To comply with the time factor requirements according to DIN 3440, pockets must conform to drawing H 1 7111 3459 (see also data sheet "Pockets 1130")

Wiring diagram



Dimensions

