

## Accessories screw-in heater

Description	Picture	Order-no.
<b>Housing type A</b> (without operating light)		007-0176.AD
<b>Housing type B, O</b> (with operating light)		007-0177.AD
<b>Housing type C</b> (with operating light & switch)		007-0178.AD
<b>Housing type W</b> (enclosed housing)		007-0175.AD
<b>Housing type S</b>		007-0173.AD
<b>Setting knob</b>		005-1051

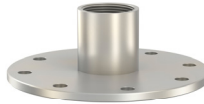
**Description****Picture****Order-no.**

**Temperature control and safety limiter**  
F..28..85°C, 110°C, 0.87m



005-1510

**Flange adapter from Ø180mm to 1½"**  
Stainless steel  
From: Ø180mm hole circle 150mm (8x13mm)  
to: DN40 (thread 1½")  
incl. seal



003-0462

**Reduction nipples**  
2"AG / 1½" IG brass



003-0139

**Cable gland M20**  
incl. locknut  
M20 x 1,5 in black



001-0333.2C