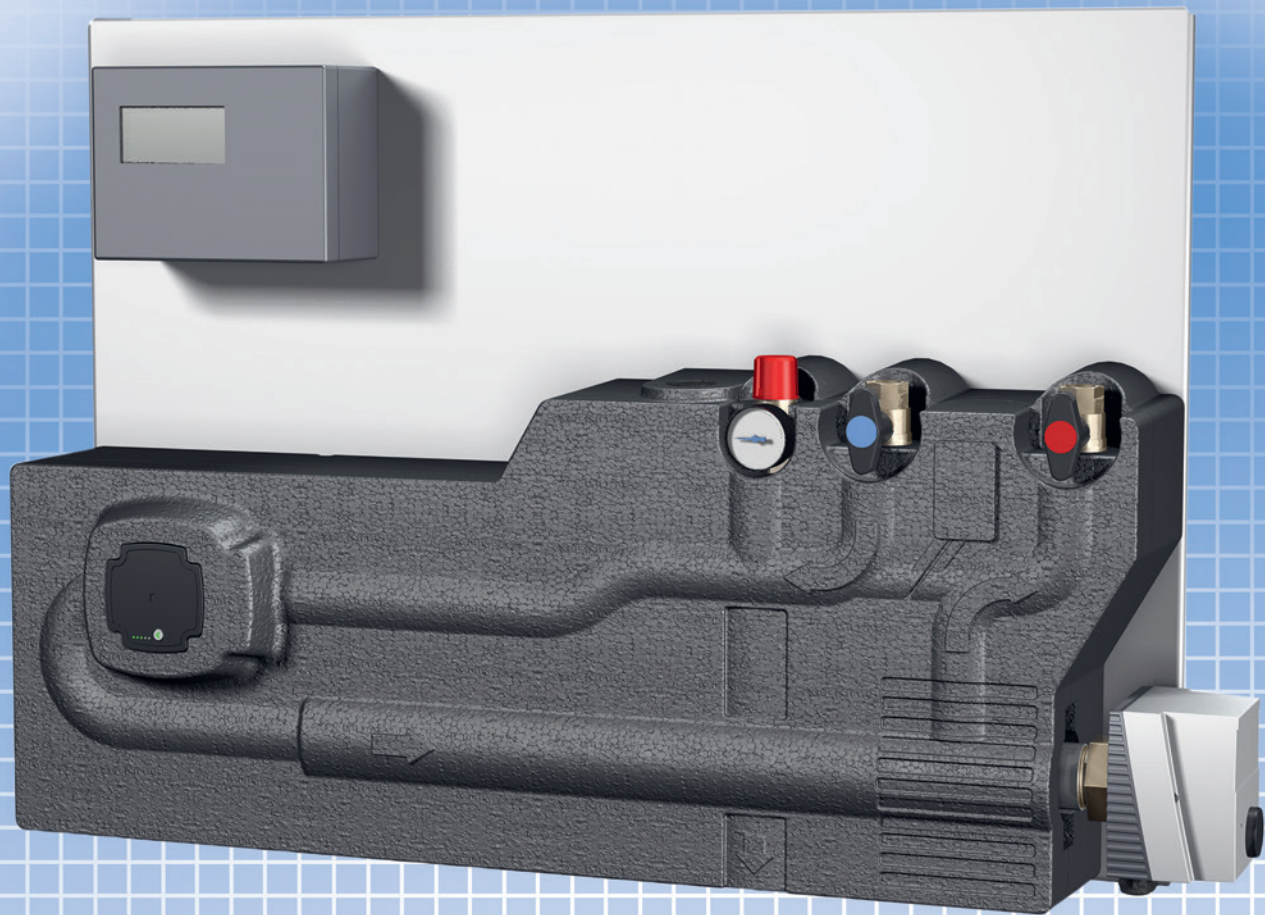




ASKOCONSOLE-WALL

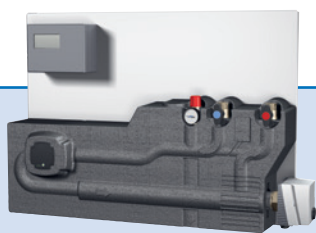
FOR HIGH STORAGE TEMPERATURES, LEGIONELLA PROTECTION
AND FOR SURPLUS PV POWER STORAGE



ASKOMA *we care
about energy*

WALL CONSOLE READY FOR CONNECTION

- Highly efficient tank charging
- Easy to install
- No turbulence in thermal stratification
- Max. surplus PV power storage
- Legionella protection
- Control possible via WLAN, LAN, Modbus TCP or 0–10 V



APPLICATION EXAMPLES

The **ASKOCONSOLE-WALL** is designed for easy installation on any conventional buffer tank to provide the user with energy-efficient, smooth, high-temperature stratification.

To this end, the **ASKOCONSOLE-WALL** can be connected directly to the **relevant buffer tank**.

On the **ASKOCONSOLE-WALL**, the user sets the thermostatic valve (no. 8) to the desired temperature between 50°C and 75°C with which the **buffer tank** should be filled.

Example: desired temperature is set at 60°C. The heating water in the **ASKOCONSOLE-WALL** circulates within the internal circuit until the water is heated to 60°C.

The thermostatic valve then opens and the hot water passes to the tank. This continues for as long as water at the desired temperature is available. Then the thermostatic valve closes and the process begins again.

The **ASKOHEAT** can heat the heating water up to 85°C and then switches off.

ASKOHEAT heating elements are available in a variety of power output levels and this **ASKOHEAT** in the following variants: 3 levels, 7 levels, IOT 7 levels or continuously variable.

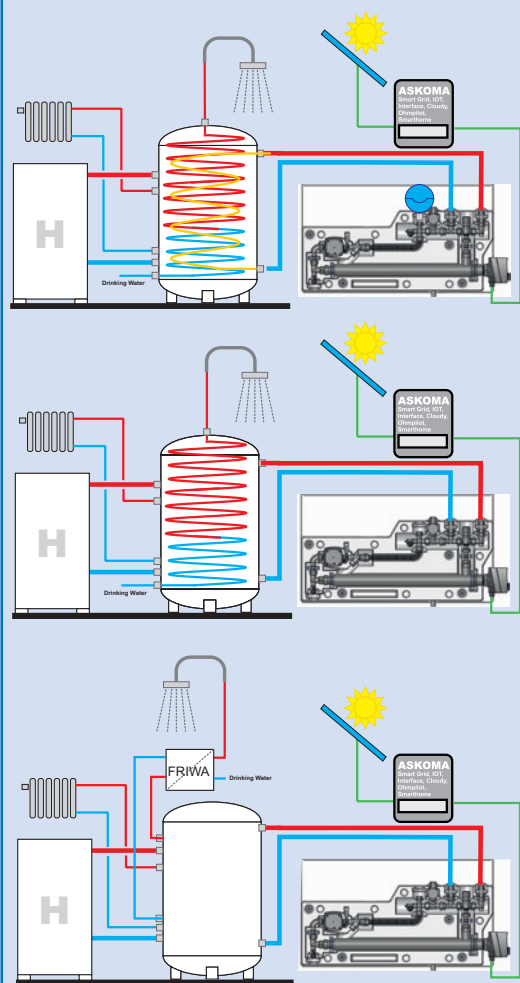
The **ASKOHEAT** IOT levels can be controlled via WLAN, LAN, Modbus TCP or 0–10 V.

This is available in 230 V and 400 V.

Which of these should be used depends on the surplus power output of your PV system and your energy management system.

It sounds complicated, but it isn't – we are happy to provide you with information about which **ASKOHEAT** heating element you require for your system.

The **ASKOCONSOLE-WALL** can also be used as direct heating.



Hygienic tank with integrated solar heat exchanger

The **ASKOCONSOLE-WALL** is designed for easy installation on a **hygienic tank with integrated solar heat exchanger**.

To this end, the **ASKOCONSOLE-WALL** can be connected directly to the **solar heat exchanger loop**. This requires the customer to connect a solar expansion tank to connection no. 4 (see next page) (size must be dimensioned and supplied by the technician on the basis of internal volume).

- **ASKOHEAT** heating elements in 4 power output levels available (see last page).

Hygienic tank without integrated solar heat exchanger

The **ASKOCONSOLE-WALL** is designed for easy, direct installation on a **hygienic tank** to provide the user with energy-efficient, smooth, high-temperature stratification.

- **ASKOHEAT** heating elements in 4 power output levels available (see last page).

Buffer tank with freshwater station

The **ASKOCONSOLE-WALL** is designed for easy, direct installation on a **buffer tank** to provide the user with energy-efficient, smooth, high-temperature stratification.

- **ASKOHEAT** heating elements in 4 power output levels available (see last page).

Subject to technical changes

ADVANTAGES OF ASKOCONSOLE-WALL

Easy to install

- Simple wall installation
- Ready to connect with two flexible oxygen-tight OXYban hoses (included)
- Pump and heating elements pre-wired
- Incl. pre-wiring for customer-specific control of surplus PV power usage (details of control manufacturer required)

Technical design

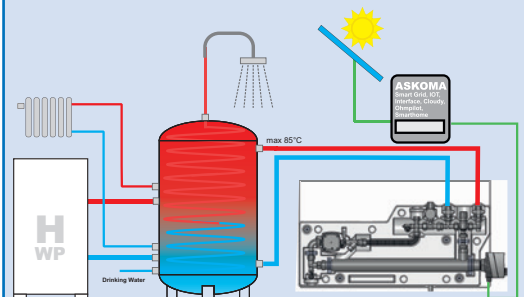
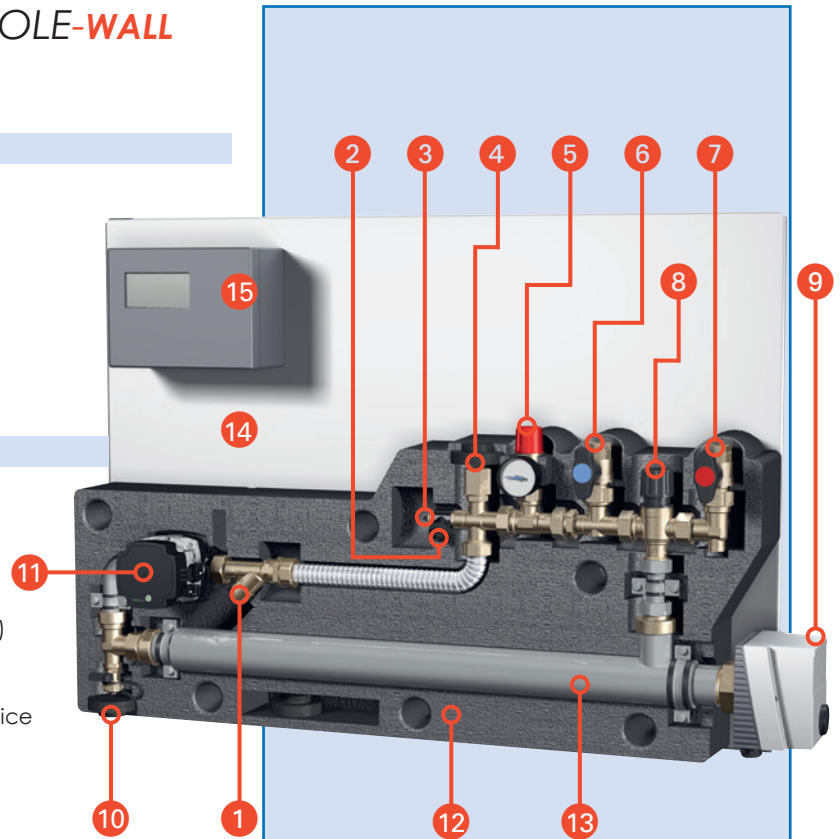
- ① Strainer
- ② Filling valve
- ③ Vent valve
- ④ Outlet for possible expansion tank
- ⑤ Pressure relief valve
- ⑥ Return flow shutoff (and OXYban hose connection)
- ⑦ Flow shutoff (and OXYban hose connection)
- ⑧ Thermostatic valve 50–75°C
- ⑨ Screw-in heating unit **ASKOHEAT** according to choice of power and control
- ⑩ Drain cock
- ⑪ Circulation pump
- ⑫ Insulation housing
- ⑬ Instantaneous water heater **ASKOFLOW**
- ⑭ Console back panel
- ⑮ Electrical junction box ready for customer-specific energy management system





Technical advantages

- For max. surplus PV power storage
- Automatic temperature control
- Flow temperature can be freely selected (50–75°C)
- Temperatures up to 85°C possible
- Full buffer tank volume can be used
- Legionella protection thanks to high temperature
- Self-regulating pump
- Temporary manual heating mode possible
- No turbulence in thermal stratification of tank
- Large hot water output capacity
- Pressure relief valve 3 bar
- Hydraulic unit tested up to 10 bar
- Slight changes possible

Approvals

- EN 60335-2-21
Condensate drain in housing prevents corrosion
No damage to the heating element during dry run
Overvoltage resistant (7.25%)
- EN 60335-1, EN 60335-2-73
- EN 55014-1, EN 55014-2
- EN 62233
- EN 60529



| | Order no.. | Appellation | Description | Mounting Depth mm | Use |
|---|--|---|--|-------------------|----------------------|
| 1.1. ASKOCONSOLE-WALL | | | | | |
|  | 012-2102 | | ASKOCONSOLE-WALL consisting of a console back panel, a hydraulic unit and an insulation housing. Strainer, filling valve, vent valve, outlet for possible expansion tank, pressure relief valve, return flow shutoff, flow shutoff, thermostatic valve 50–75°C, connection for ASKOHEAT according to choice of power and control, drain cock, circulation pump, two-part insulation housing, two oxygen-tight OXYban connection hoses for flexible connection to the buffer tank (length 1600 mm). | 1300x700 | |
| 1.2. ASKOCONSOLE-WALL including ASKOCLOUD | | | | | |
|  | 012-2201 | | As 1.1. and 1.2. with ASKOCLOUD , ASKOSMARTMETER-WLAN , for exclusive surplus PV power usage in the heating element for energy storage in the buffer tank. For this, you select the correct power and voltage for your heating element under 3.3. or 3.4. with WLAN outlet as required (an on-site, customer-specific energy management system is required for comprehensive surplus power usage, see 1.2.). | 1300x700 | |
| 2.2. ASKOCONSOLE-WALL for customer-specific energy management system – pre-wired | | | | | |
|  | 012-2101 012-5500 105-0001 012-2105 012-2106 | with JUNCTION BOX for OHMPILOT for SMARTFOX for ZIEHL 4000 for SOLAREEDGE | As 1.1. with additional electrical junction box ready for customer-specific energy management system (can be chosen according to size requirements), incl. pre-wiring of circulation pump and heating element, meaning easy on-site connection to junction box only (we are happy to provide information on which ASKOHEAT heating element you require for your energy management system). | 1300x700 | |
| 3.2. ASKOHEAT-IoT, 7 levels, 230 V, WLAN, LAN, including 4 x PT 1000 sensors | | | | | |
|  | 012-6261 | AHIR-BI-IOT2-C-1.7 | ASKOHEAT-IoT , EHK 1 1/2" EHK 230 V, 7 levels, 1.75 kW | 400 | console |
| | 012-6262 | AHIR-BI-IOT2-C-3.5 | ASKOHEAT-IoT , EHK 1 1/2" EHK 230 V, 7 levels, 3.5 kW | 600 | console |
| | 012-6263 | AHIR-BI-IOT2-C-4.4 | ASKOHEAT-IoT , EHK 1 1/2" EHK 230 V, 7 levels, 4.4 kW | 700 | console |
| 3.3. ASKOHEAT-IoT, 7 levels, 400 V, WLAN, LAN, including 4 x PT 1000 sensors | | | | | |
|  | 012-6281 | AHIR-BI-IOT4-C-1.7 | ASKOHEAT-IoT , EHK 1 1/2" EHK 400 V, 7 levels, 1.75 kW | 400 | console |
| | 012-6282 | AHIR-BI-IOT4-C-3.5 | ASKOHEAT-IoT , EHK 1 1/2" EHK 400 V, 7 levels, 3.5 kW | 600 | console |
| | 012-6283 | AHIR-BI-IOT4-C-4.4 | ASKOHEAT-IoT , EHK 1 1/2" EHK 400 V, 7 levels, 4.4 kW | 700 | console |
| 3.4. ASKOHEAT-INTERFACE, 7 levels, 230 V, WLAN, LAN, Modbus-TCP, analog 0-10 V | | | | | |
|  | 012-6361 | AHIR-BI-IOT2-A-1.7 | ASKOHEAT-IF , EHK 1 1/2" EHK 230 V, 7 levels, 1.75 kW | 400 | console |
| | 012-6362 | AHIR-BI-IOT2-A-3.5 | ASKOHEAT-IF , EHK 1 1/2" EHK 230 V, 7 levels, 3.5 kW | 600 | console |
| | 012-6263 | AHIR-BI-IOT2-A-4.4 | ASKOHEAT-IF , EHK 1 1/2" EHK 230 V, 7 levels, 4.4 kW | 700 | console |
| 3.5. ASKOHEAT-INTERFACE 7 levels, 400 V, WLAN, LAN, Modbus-TCP, analog 0-10 V | | | | | |
|  | 012-6381 | AHIR-BI-IOT4-A-1.7 | ASKOHEAT-IF , EHK 1 1/2" EHK 400 V, 7 levels, 1.75 kW | 400 | console |
| | 012-6382 | AHIR-BI-IOT4-A-3.5 | ASKOHEAT-IF , EHK 1 1/2" EHK 400 V, 7 levels, 3.5 kW | 600 | console |
| | 012-6383 | AHIR-BI-IOT4-A-4.4 | ASKOHEAT-IF , EHK 1 1/2" EHK 400 V, 7 levels, 4.4 kW | 700 | console |
| | 012-0126 | | optional with Modbus-TCP sensor set with 4x PT 1000 sensor | | console |
| 3.6. ASKOHEAT-PV, 7 levels, 230 V, Relay control | | | | | |
|  | 012-6151 | AHIR-BI-PV2-A-1.75 | ASKOHEAT-PV EHK 1 1/2" EHK 230 V, 7 levels, 1.75 kW | 400 | console/water heater |
| | 012-6152 | AHIR-BI-PV2-A-3.5 | ASKOHEAT-PV EHK 1 1/2" EHK 230 V, 7 levels, 3.5 kW | 600 | console/water heater |
| | 012-6153 | AHIR-BI-PV2-A-4.4 | ASKOHEAT-PV EHK 1 1/2" EHK 230 V, 7 levels, 4.4 kW | 700 | console/water heater |
| 3.7. ASKOHEAT-PV, 7 levels, 400 V, Relay control | | | | | |
|  | 012-6171 | AHIR-BI-PV4-A-1.75 | ASKOHEAT-PV EHK 1 1/2" EHK 400 V, 7 levels, 1.75 kW | 400 | console/water heater |
| | 012-6172 | AHIR-BI-PV4-A-3.5 | ASKOHEAT-PV EHK 1 1/2" EHK 400 V, 7 levels, 3.5 kW | 600 | console/water heater |
| | 012-6173 | AHIR-BI-PV4-A-4.4 | ASKOHEAT-PV EHK 1 1/2" EHK 400 V, 7 levels, 4.4 kW | 700 | console/water heater |
| 3.8. ASKOHEAT-OHMPILOT, continuously variable, 400 V | | | | | |
|  | 012-5501 | AHIR-BI-OP-1.0 | ASKOHEAT-OHMPILOT , 400 V, continuously variable 1.0 kW | 300 | console/water heater |
| | 012-5502 | AHIR-BI-OP-2.0 | ASKOHEAT-OHMPILOT , 400 V, continuously variable 2.0 kW | 300 | console/water heater |
| | 012-5503 | AHIR-BI-OP-2.5 | ASKOHEAT-OHMPILOT , 400 V, continuously variable .5 kW | 350 | console/water heater |
| | 012-5504 | AHIR-BI-OP-3.0 | ASKOHEAT-OHMPILOT , 400 V, continuously variable 3.0 kW | 400 | console/water heater |
| | 012-5505 | AHIR-BI-OP-3.8 | ASKOHEAT-OHMPILOT , 400 V, continuously variable 3.8 kW | 450 | console/water heater |
| | 012-5506 | AHIR-BI-OP-4.5 | ASKOHEAT-OHMPILOT , 400 V, continuously variable 4.5 kW | 500 | console/water heater |
| | 012-5507 | AHIR-BI-OP-6.0 | ASKOHEAT-OHMPILOT , 400 V, continuously variable 6.0 kW | 600 | console/water heater |
| | 012-5508 | AHIR-BI-OP-7.5 | ASKOHEAT-OHMPILOT , 400 V, continuously variable 7.5 kW | 700 | console/water heater |
| 3.9. ASKOHEAT-SOLAREEDGE, continuously variable, 230 V | | | | | |
|  | 012-5701 | AHIR-BI-SE-1.0 | ASKOHEAT-SOLAREEDGE , 230 V, continuously variable 1.0 kW | 300 | console/water heater |
| | 012-5702 | AHIR-BI-SE-2.0 | ASKOHEAT-SOLAREEDGE , 230 V, continuously variable 2.0 kW | 300 | console/water heater |
| | 012-5703 | AHIR-BI-SE-2.5 | ASKOHEAT-SOLAREEDGE , 230 V, continuously variable 2.5 kW | 350 | console/water heater |
| | 012-5704 | AHIR-BI-SE-3.0 | ASKOHEAT-SOLAREEDGE , 230 V, continuously variable 3.0 kW | 400 | console/water heater |

Special sizes on request