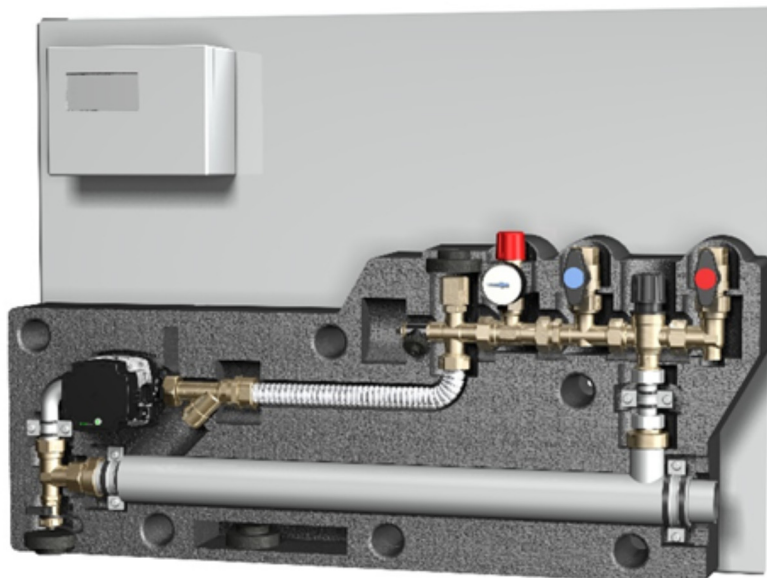


## Fitting instruction, user manual and service

Please keep in a safe place

Wall console ready for connection for heating water

- ASKOWALL-OP
- 012-5500



### Index

<u>General safety information</u>	Page 2
<u>Design</u>	Page 3
<u>Functional description</u>	Page 4
<u>Scope of delivery</u>	Page 4
<u>Assembly and installation</u>	Page 5
<u>Filling</u>	Page 9
<u>Leakage check</u>	Page 10
<u>Setting of thermostatic valve</u>	Page 10
<u>Overview electrical connection</u>	Page 11
<u>Closing of insulation cover</u>	Page 12
<u>Installation instructions</u>	Page 14

### Electrical connection

<u>Electric diagram for 012-5500</u>	Page 13
--------------------------------------	---------

## General safety information



Do not place the device into operation until after having read user manual.



These devices may be used by children aged 8 or more and by persons with reduced physical, sensory or mental capacity or those lacking in experience and/or knowledge if they are supervised or if they have been instructed in safe operation of the device and understood the resultant dangers.

Children may not play with the device. The device may not be cleaned or serviced by children unless they are supervised.

The legal regulations of the respective country, the local electricity supply company and the waterworks must be observed.

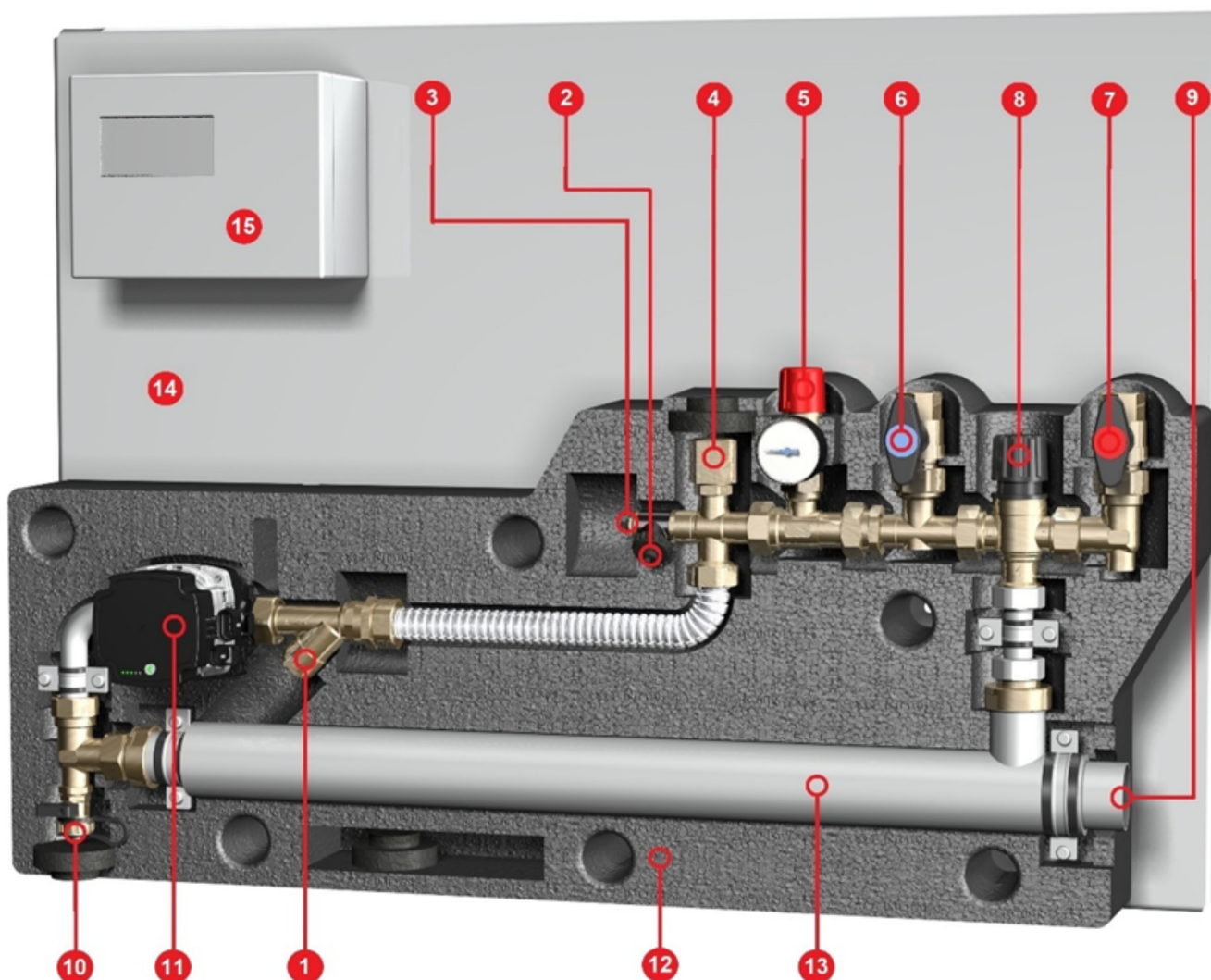


The **ASKOWALL** is a device of protection class I and must be connected to the protective conductor.

The **ASKOWALL** is only suitable for closed (pressurised system) operation.

We do not accept any guarantee or liability for any damage caused by improper repair attempts or the independent installation of inadmissible components or by changes to the installed safety devices.

**Installation, setting and removal must be carried out only by sanitary and electrical specialists**

**Design** for the user and qualified installer**Overview of the components and the function**

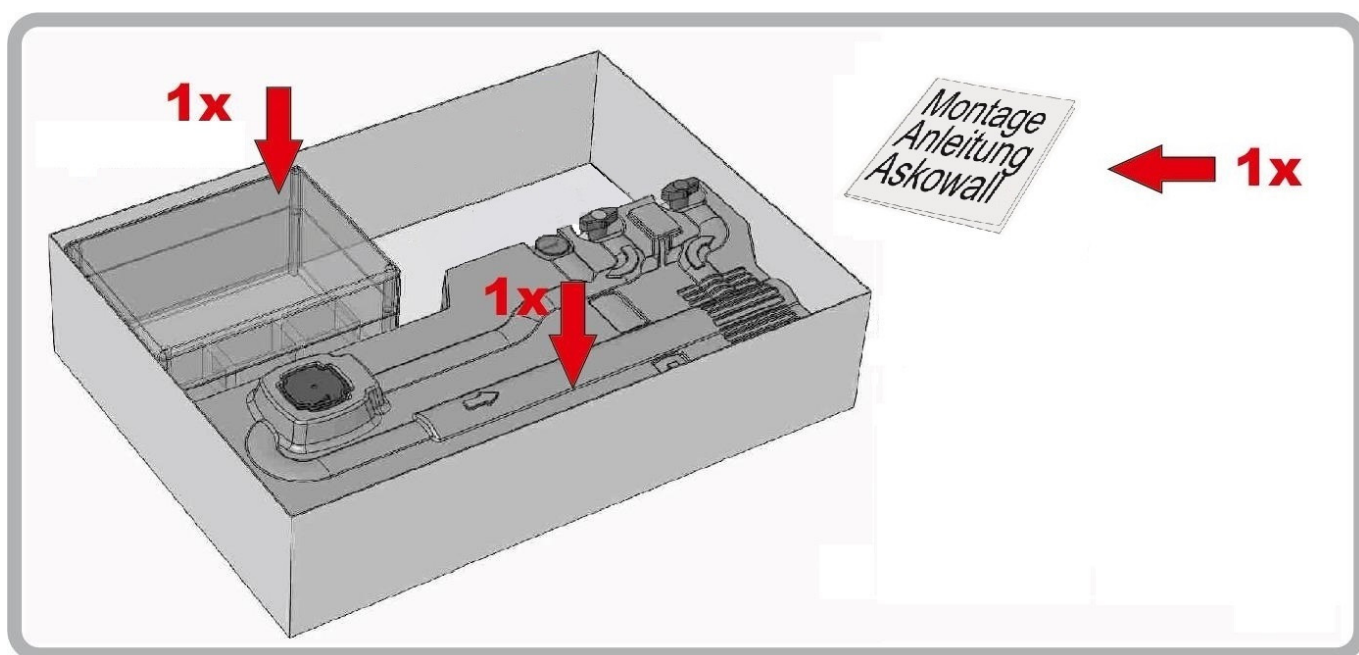
1. Mud flap
2. Filling valve
3. Vent valve
4. Connection for possible expansion tank (1" internal thread, flat sealing)
5. Pressure relief valve
6. Return flow shutoff & OXYban hose connection
7. Flow shutoff & OXYban hose connection
8. Thermostatic valve 50 - 75°C
9. 1½" threaded connection for screw-in heater
10. Drain cock
11. Circulation pump
12. Insulation housing
13. Instantaneous water heater **ASKOFLOW**
14. Console rear wall
15. Electrical junction box for pump incl. OFF-delay relay

## Functional description

### Function

The **ASKOWALL-OP** is a hydraulic unit with connections for cold water, hot water and a screw-in heater. The heating water is circulated in this hydraulic unit by means of an integrated speed-controlled circulation pump. The screw-in heater heats the circulating heating water. When the heating water reaches the temperature set on the thermostatic valve, it opens and the heated water is pumped into the storage tank. At the same time, cold water flows through the cold water connection and cools the circuit, and the thermostatic valve then closes again. The heating water now circulates again until the temperature is reached. As a result of this process, the storage tank is loaded with hot water from top to bottom and there is no turbulence in the storage tank.

## Scope of delivery



### Scope of delivery

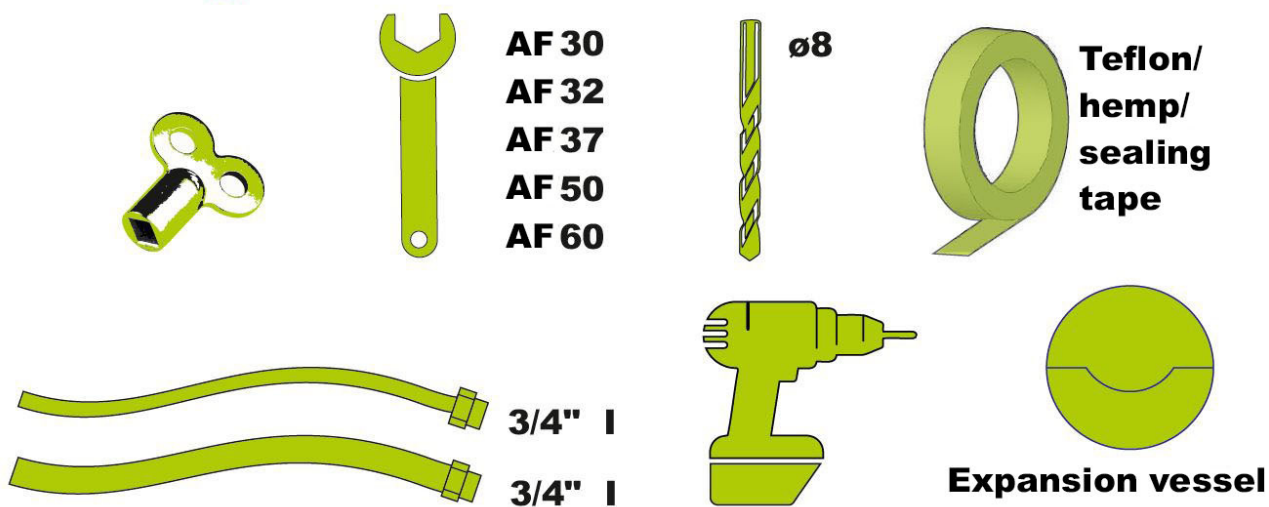
The delivery includes the **ASKOWALL-OP** incl. the rear wall and two-part insulating sleeve, these assembly instructions, four screws (6 x 70mm), four dowels (8 x 50mm) and a piece of hose for the connection to the blow-off line.

Article 012-5501 **ASKOWALL-OP** also includes a housing for connecting the pump.

The **ASKOWALL-OP** does not include any connection hoses or screw-in heater. This screw-in heater is required for commissioning, but must be ordered separately.

## Assembly and installation

### On site

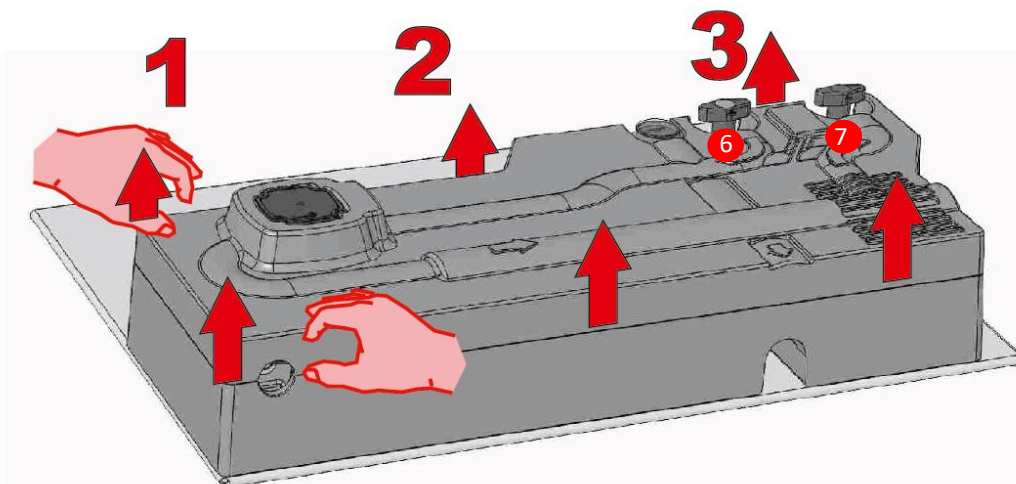


### Material and tools

Various open-end wrenches, impermeable material, a  $\varnothing 8$ mm rock drill & impact drill (for wall mounting on a brick or concrete wall), a heating vent key and hoses for filling and ventilation are required for the installation of the ASKOWALL-OP.

If the ASKOWALL-OP is connected to a heat exchanger, a suitable expansion vessel is necessary.

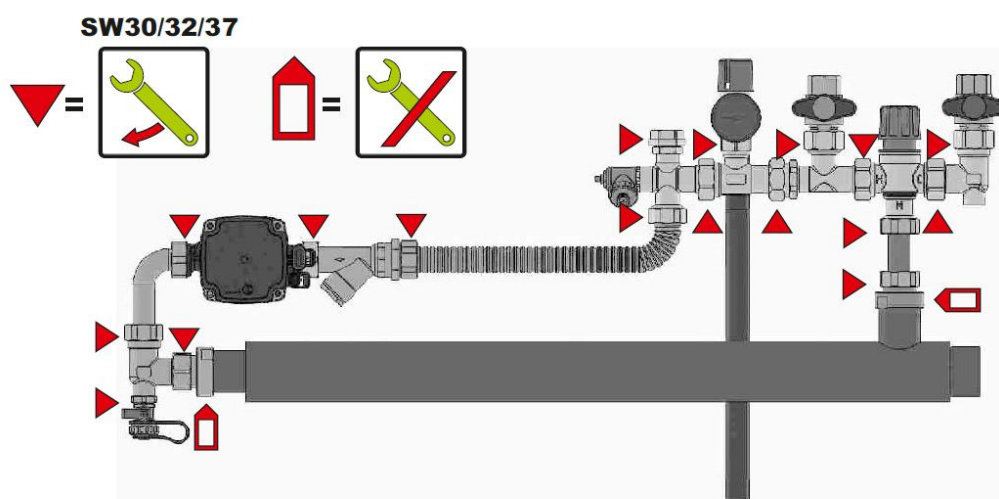
## Assembly and installation



### Opening the insulation cover

Before opening the insulation cover, the two shut-off valves of flow and return (no. 6 and no. 7) must be closed.

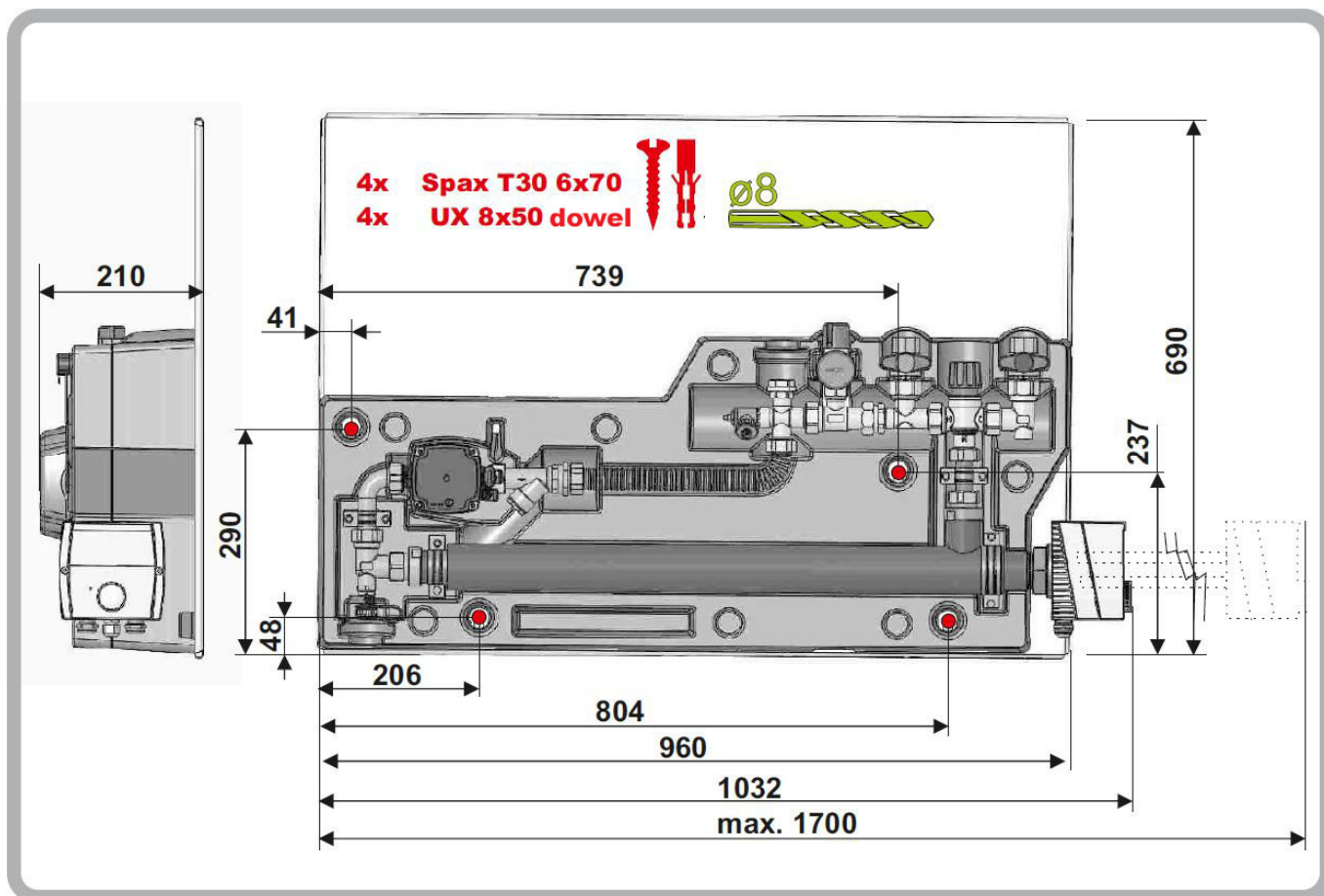
Remove the insulation cover carefully and, if possible, evenly so that the six locking pins on the cover do not tear off.



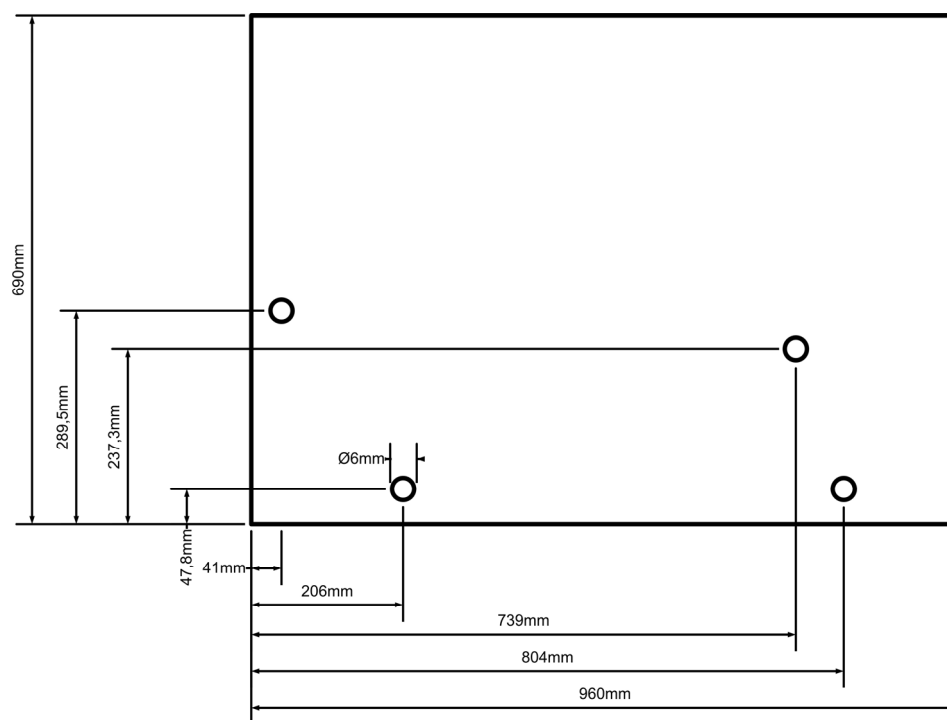
### Retighten screw connections

All screw connections marked with a red dot must be retightened for safety reasons. A leak test has already been carried out at the factory during manufacture.

## Assembly and installation

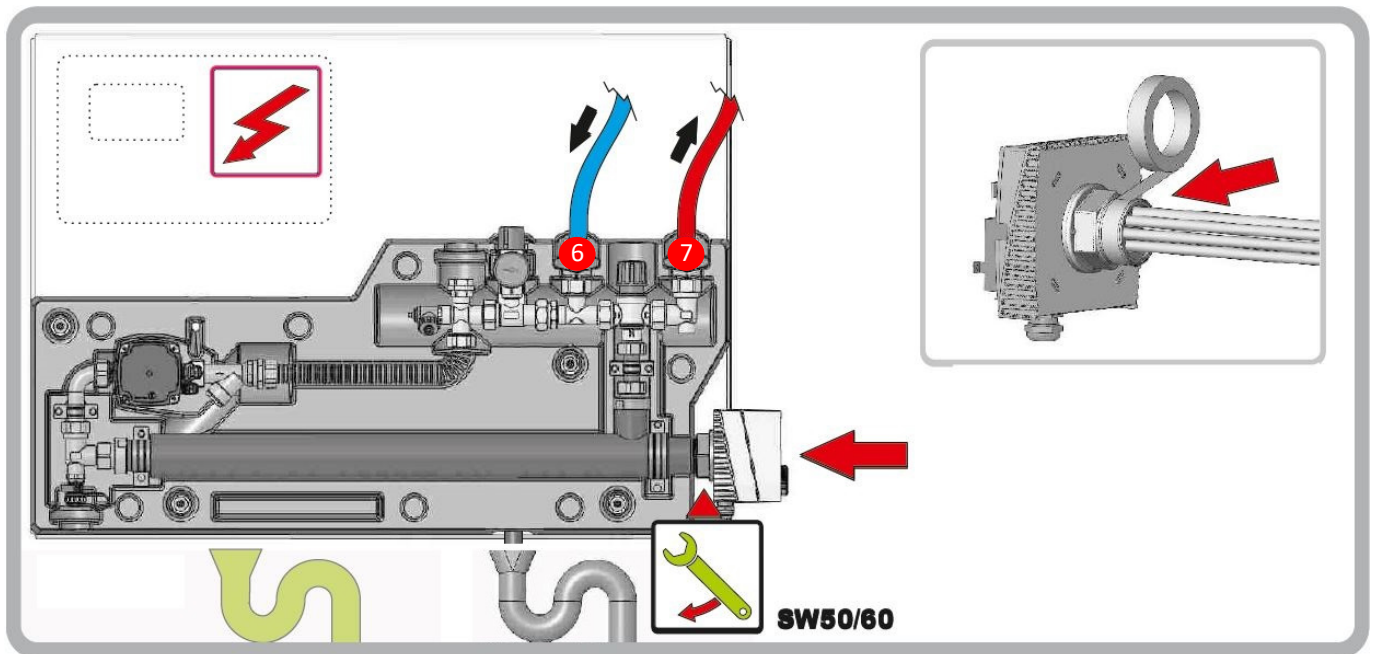


The ASKOWALL-OP can be attached to the wall using the four screws supplied.



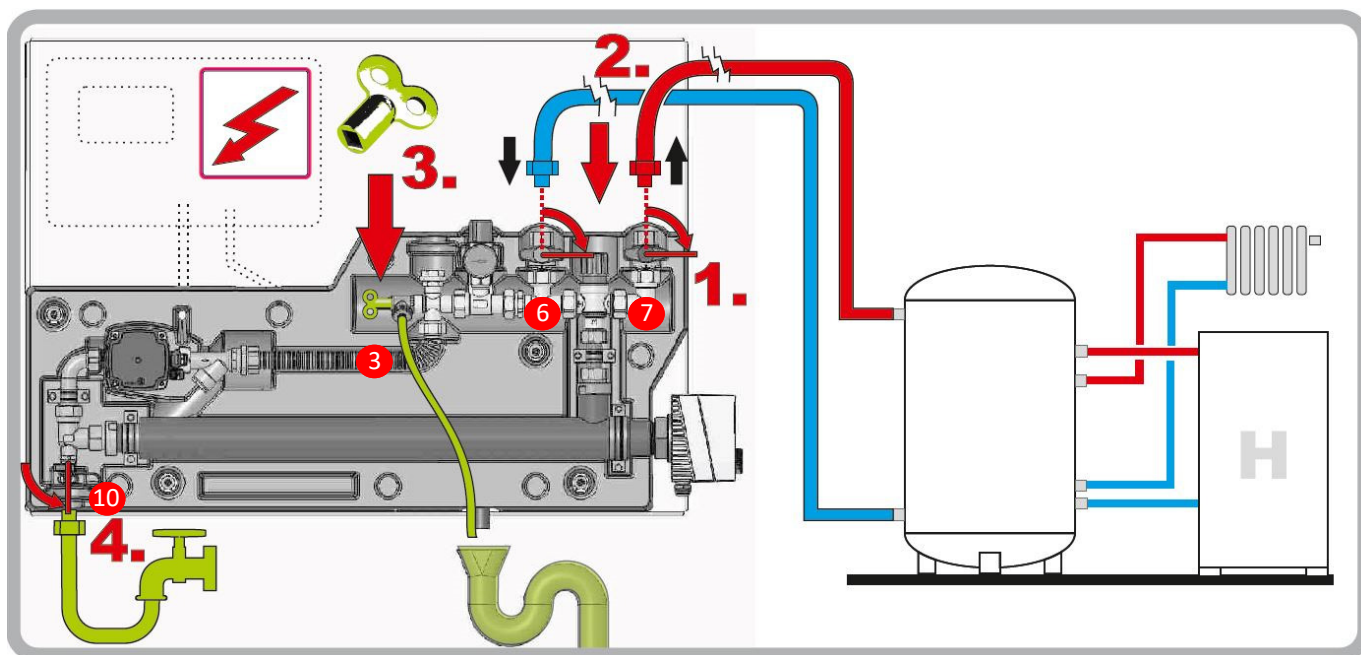
The holes have to be drilled according to the drawing.

## Assembly and installation



- Seal the screw-in heater with approved sealing material and screw it in
- The screw-in heater's cable glands must be positioned downwards
- Connect the drain hose of the safety valve to the on-site drain according to the regulations
- Connect the supply and return lines on the shut-off valves (no. 6 and no. 7) of the **ASKOWALL-OP**. Therefor the connection hoses for **ASKOWALL-OP** with the article number 012-0130 can optionally be used

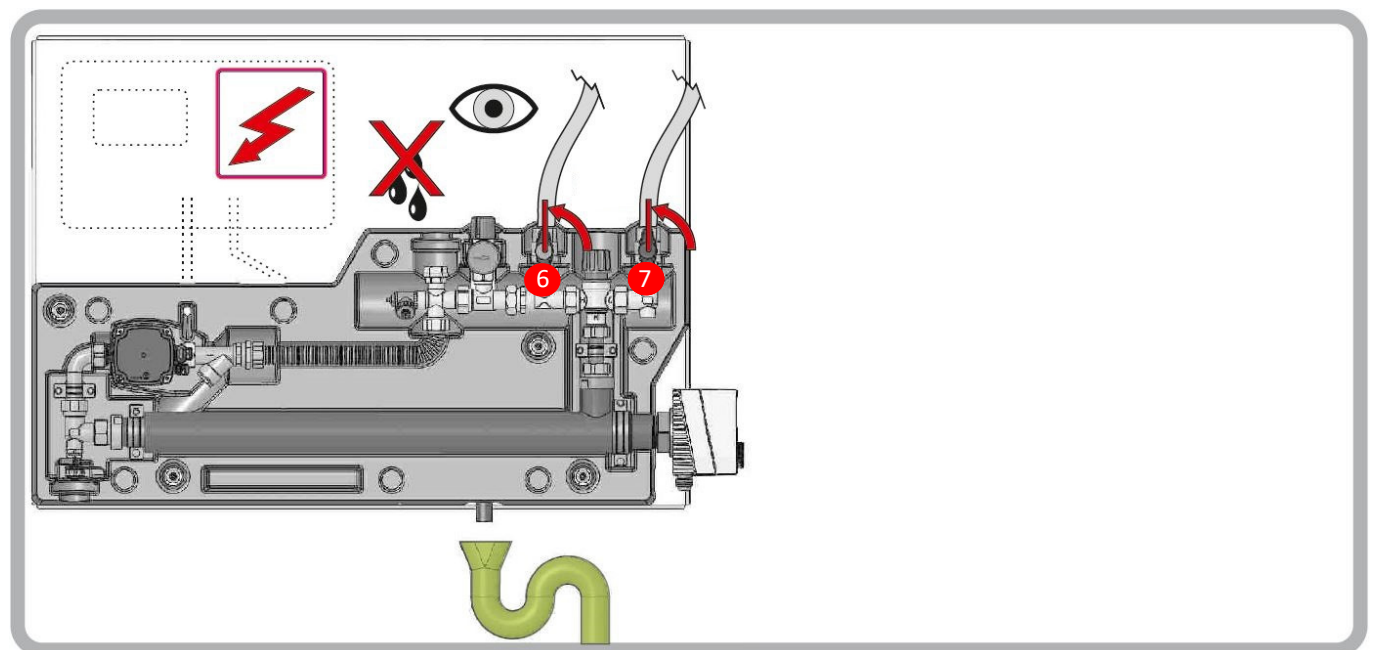
## Filling



### Filling the ASKOWALL-OP

1. Return flow shutoff (no. 6) and flow shutoff (no. 7) must be closed.
2. Connect the flow line (right / red) to the top of the storage tank.  
Connect the return line (left / blue) to the bottom of the storage tank.
3. Connect the on-site mobile ventilation hose to the ventilation valve (no. 3) and open it.
4. Connect the heating water inlet to the drain cock (no. 10) and open the drain cock.  
The **ASKOWALL-OP** is filled by supplying the heating water, the air can escape from the open vent valve.  
If only heating water comes out of the vent valve, the **ASKOWALL-OP** is completely filled and the vent valve (no. 3) can be closed. The drain cock must be closed before dismantling the heating water supply.

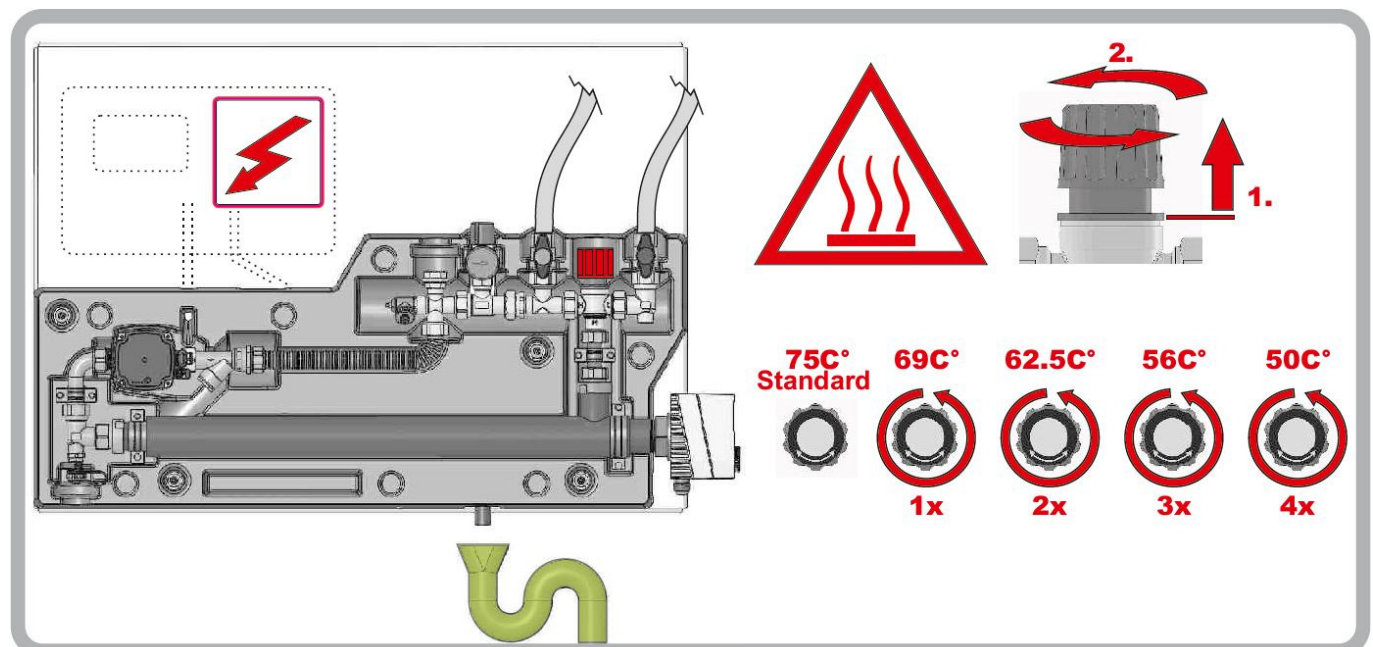
## Leakage check



After opening the two shutoff of flow and return (no. 6 & 7), the system must be checked for leaks. No water leakage may be detected.

If a screw connection is leaking, it must be retightened.

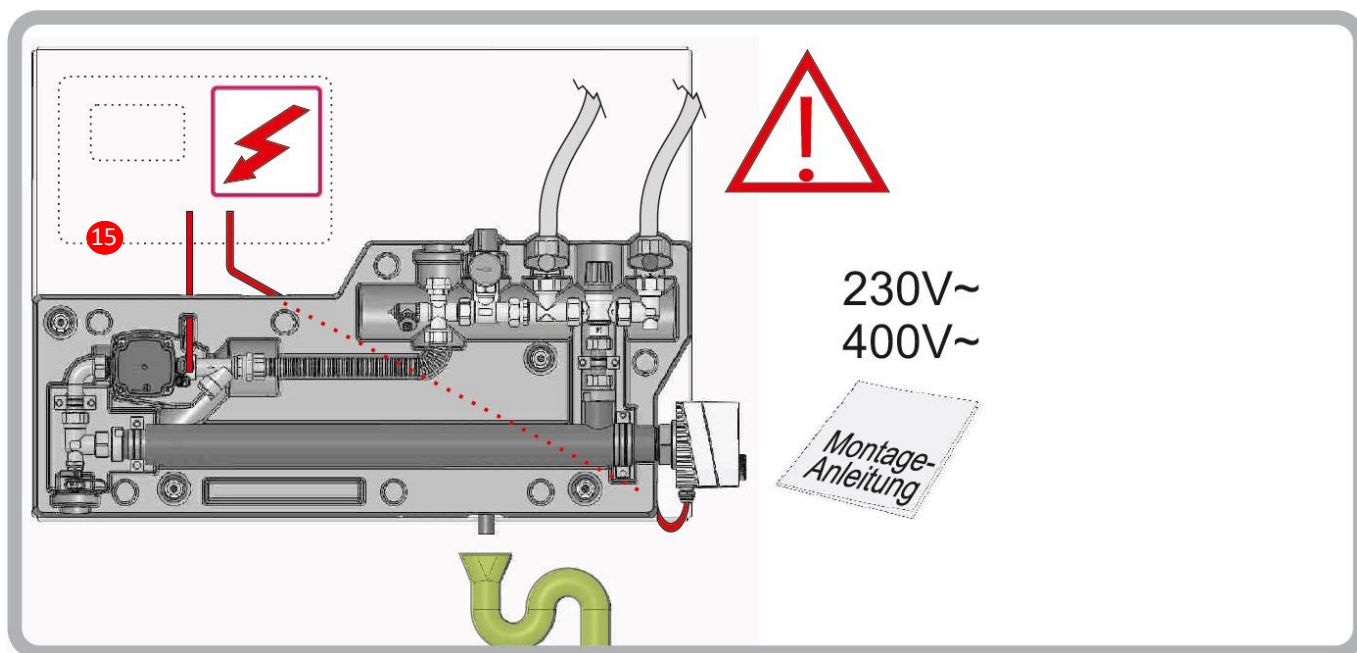
## Setting of the thermostatic valve



### Setting the output temperature to the buffer tank (opening temperature of the thermostatic valve)

1. Pull the lower plastic ring up and hold it there.
2. Set the rotary control to the desired temperature (turn).  
Then release the lower plastic ring and snap it into place.

## Electrical connection



### 012-5500 ASKOWALL-OP

With this device, only the connection cable of the circulation pump is installed in a housing, which is attached to the rear wall of the **ASKOWALL-OP**. A OFF-delay relay is built into this housing, which delays the shutdown of the pump.

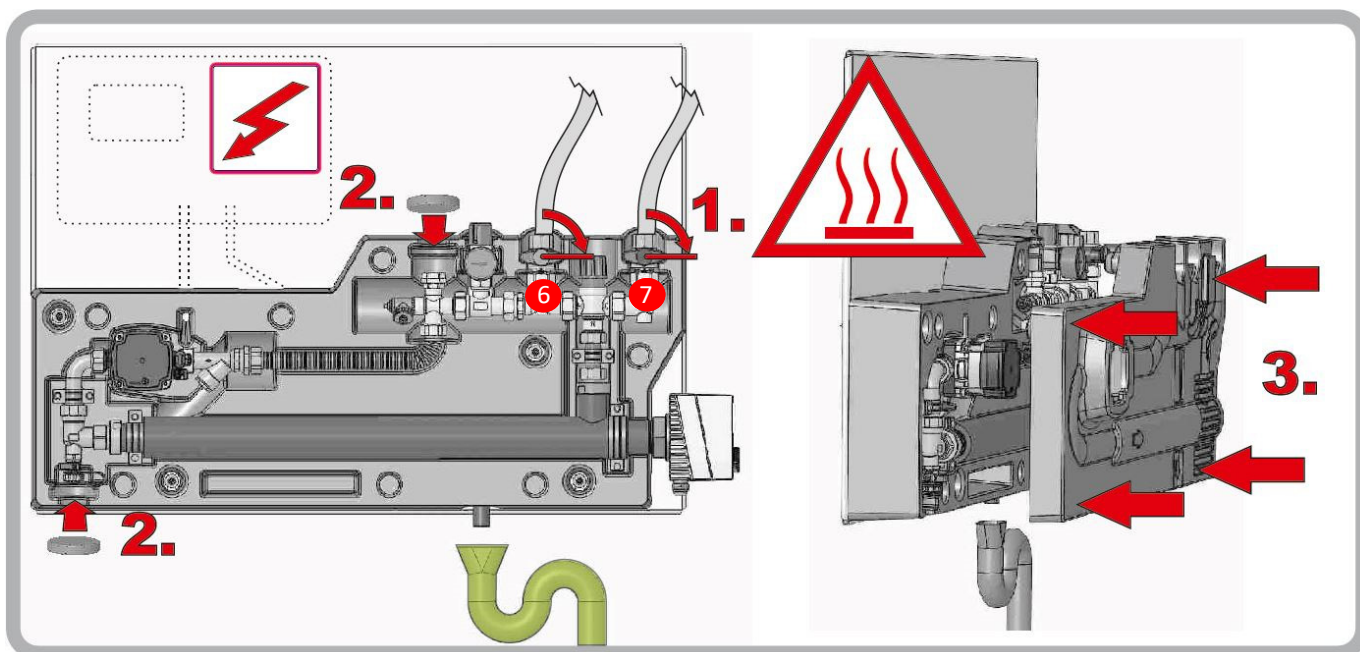
The OFF-delay relay is controlled via Fronius Ohmpilot.

The electrical installer is responsible for the electrical connection of the circulation pump, the screw-in heater and the control line between the Fronius Ohmpilot and the junction box.

#### Customer connection cable

- A supply line must be created for the circulation pump, the pump requires 1x 230V~, the current consumption is a maximum of 0.52A (pump output 52W).
- A connection line must be created between the Fronius Ohmpilot and the connection housing. This is used to control the pump in the **ASKOWALL-OP**.
- A supply line for the load circuit of the heating element must be created. The power consumption and the connection options are device-dependent (see separate installation / operating instructions for the screw-in heater)

## Insulation



**ATTENTION:** Before closing the insulation cover, the two shut-off valves of flow and return (no. 6 and no. 7) must be closed. Otherwise the insulation cover cannot be closed.

1. Close the shut-off valves of flow and return (no. 6 and no. 7).
2. The two insulation washers supplied are for closing the connections of the expansion tank (no. 4) and the drain cock (no. 10) that may not be used. These can be inserted into the prefabricated slots.
3. After closing the cover, the shut-off valves of flow and return can be opened again.



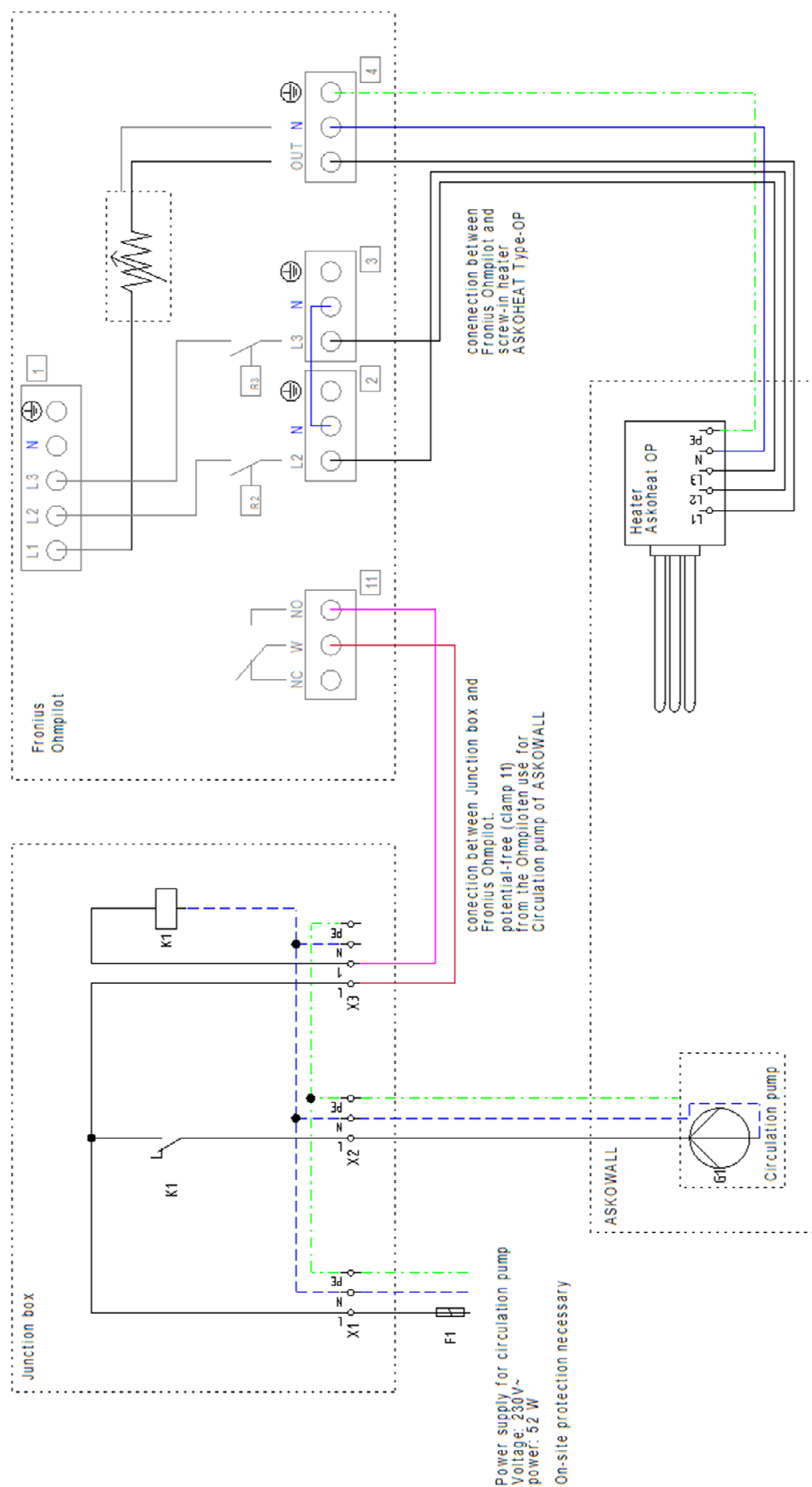
**ATTENTION:**

Pipes, fittings and connection hoses can be hot, there is a risk of burns!

# Electric diagram

## Electric diagram for 012-5500 ASKOWALL-OP

### Junction box to ASKOWALL for Fronius Ohmpilot



## Installation instructions

Operating data, application, dimensions and model of the **ASKOWALL-OP** can be found in the fitting instructions / user manuals of the **ASKOWALL-OP**. This document is enclosed with the **ASKOWALL-OP**.

**The conical thread of the screw-in heater must be provided with an approved sealant before installation in the ASKOWALL-OP.**

**The ASKOWALL-OP may only be installed horizontally.**

Turning or tipping is not permitted due to the formation of air pockets.

Make sure that the heating tubes are entirely covered by the liquid before placing into operation. The circulation of the liquid shall not be inhibited.

**The device may only be used to heat up heating water.**

### Electrical connection

The device is intended for fixed connection only and may be connected only to fixed cables. Select a cable cross-section suitable for the power rating on the device. All poles of the device must be able to be disconnected from the mains by means of an at least 3mm isolating distance. The PE wire must be 100mm longer than the other conductors.

**The regulations of the local electricity provider must be observed!**

### In the event of the following the guarantee is void:

- Not complying with this paperwork „Fitting instructions, user manual, and service“
- Not complying with the storage heater manufacturer's fitting instructions
- Technical modifications, repairs or tampering with the device (including exchanging the pump, piping or the valve)
- Heating up domestic water
- Applications for which the device was not designed
- Installation of a foreign heating element
- Incorrect operation and maintenance
- Not complying with directive VDI 2035



### **ATTENTION!**

All power supply circuits must have been switched off before accessing the connection terminals.